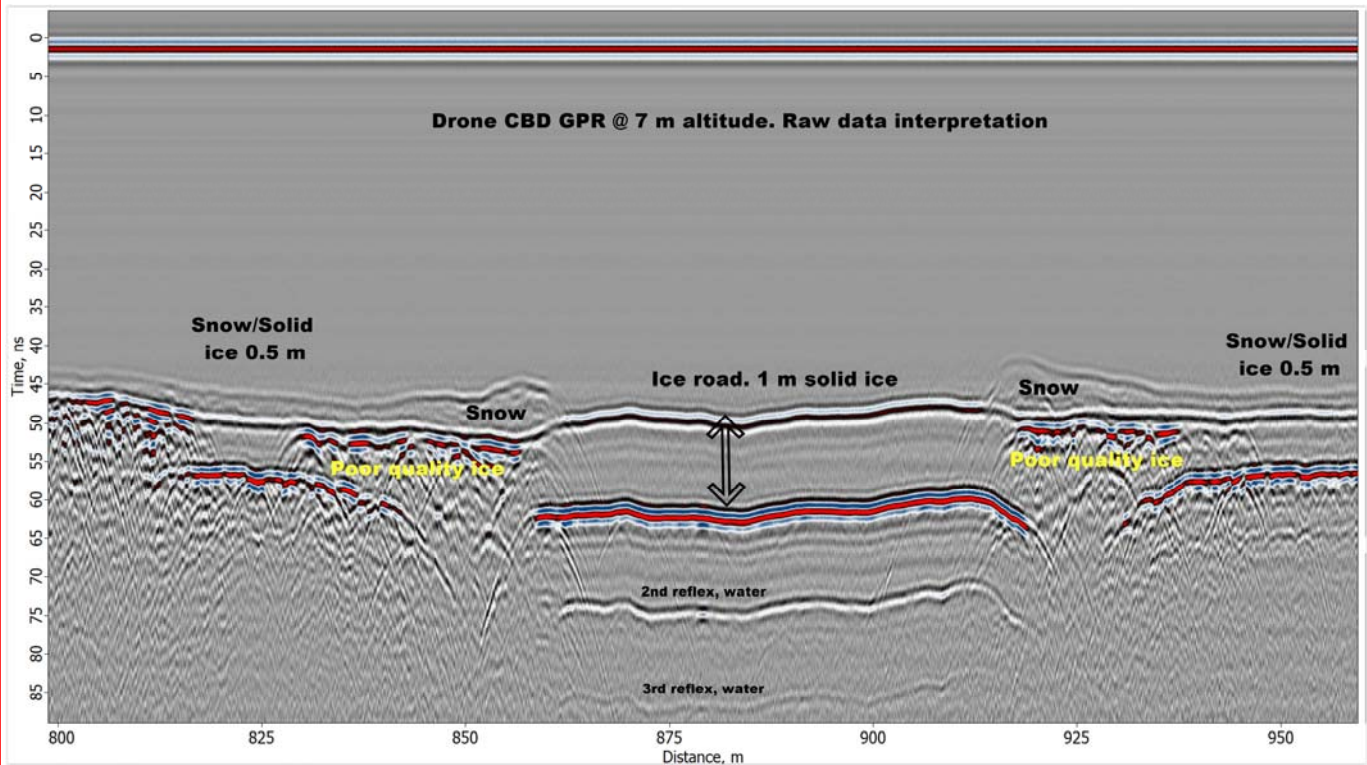


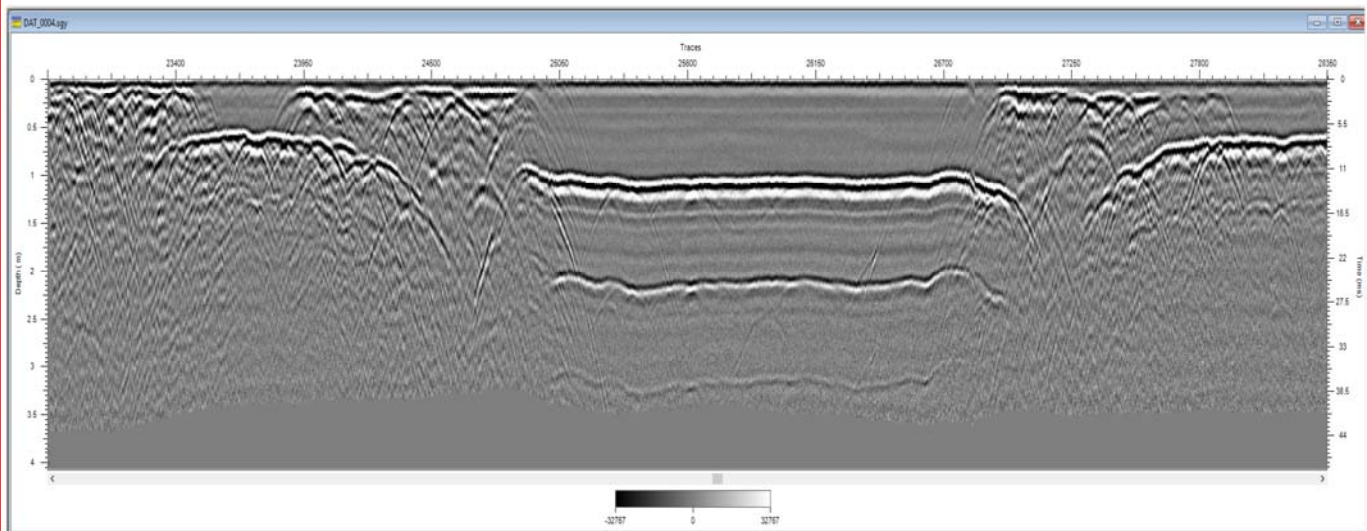
# Sample Data — Drone CBD GPR System Ice road over Lule river in March 2018

High quality, high resolution raw GPR data: Drone DJI M600Pro & CBD GPR system with 200, 400 and 800 MHz antennas at 7 m altitude over snow/ice.

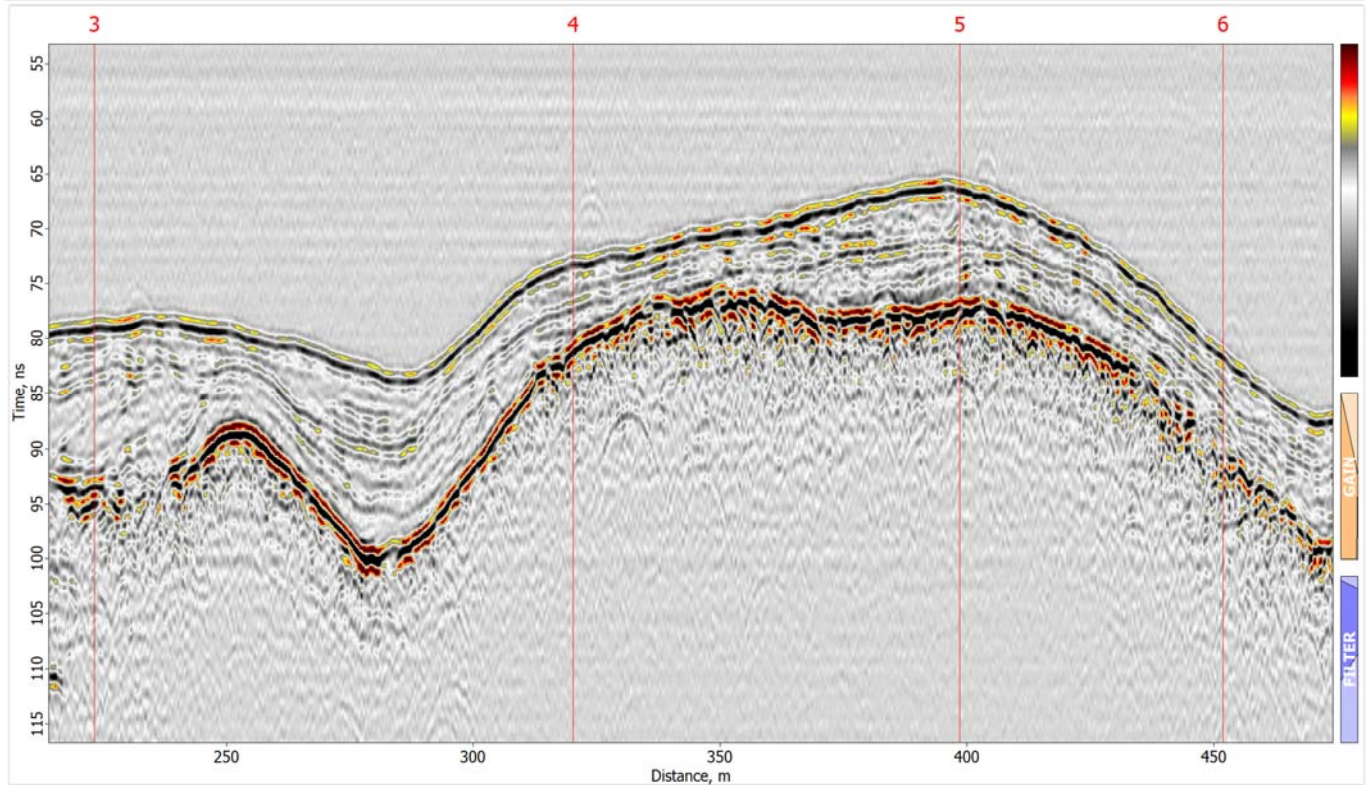
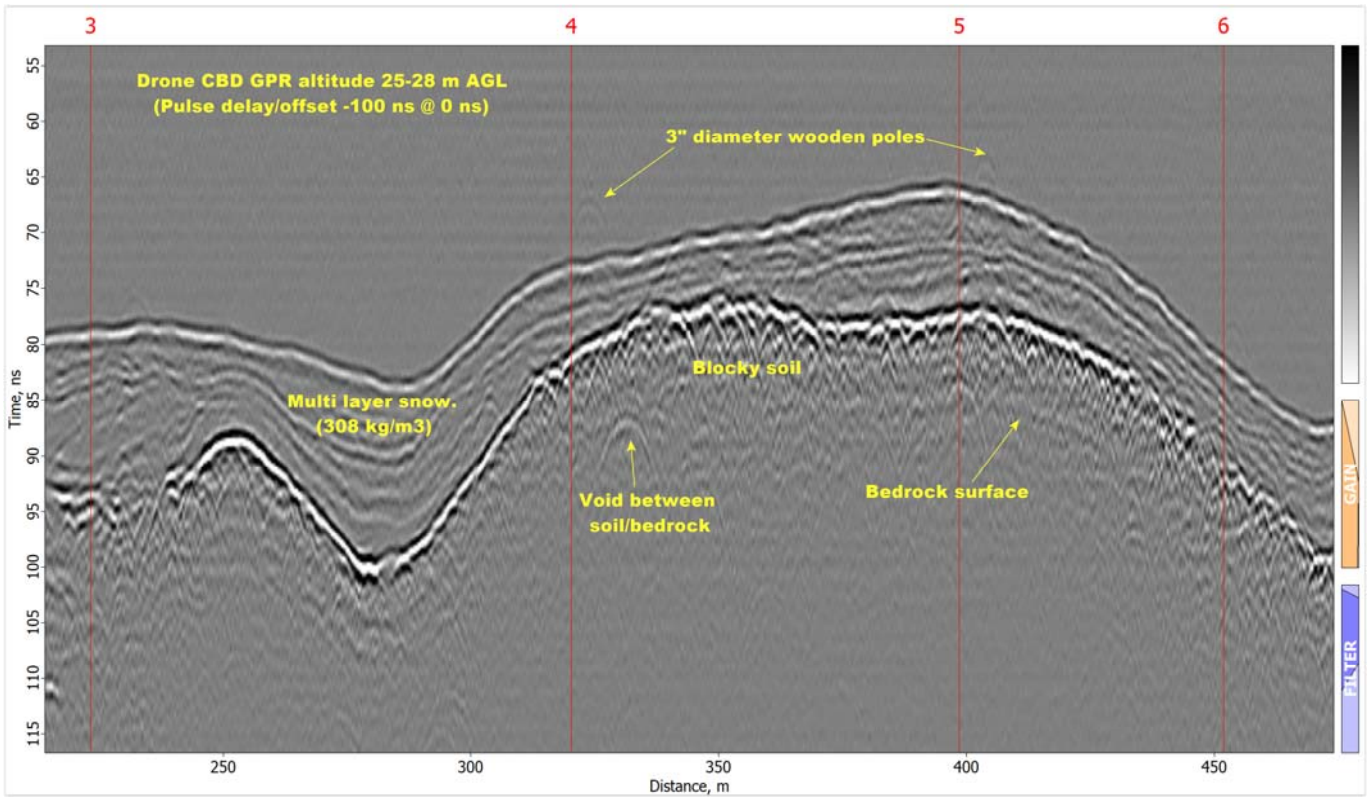
**Top data image:** Raw GPR data taken over an ice road with surroundings, Lule river in March 2018. The drone altitude was 7 m, 46 ns above ice. Note the homogenous 1 m thick ice for the ice road, the poor quality watersoaked ice, 25 m on both side of the road and only half a meter thick ice under the snow coverage outside this poor quality ice area.



**Lower data image:** Top data image with the snow cover removed and raised ice surface showing ice thickness variations.



# Sample Data — Drone CBD GPR System Snow thickness, Sitas April 2018



Radarteam Sweden AB  
Gränsvägen 51, 961 37 Boden, Sweden  
Info Brazil:  
[www.alphageofisica.com.br](http://www.alphageofisica.com.br)