

RADAN[®] 7

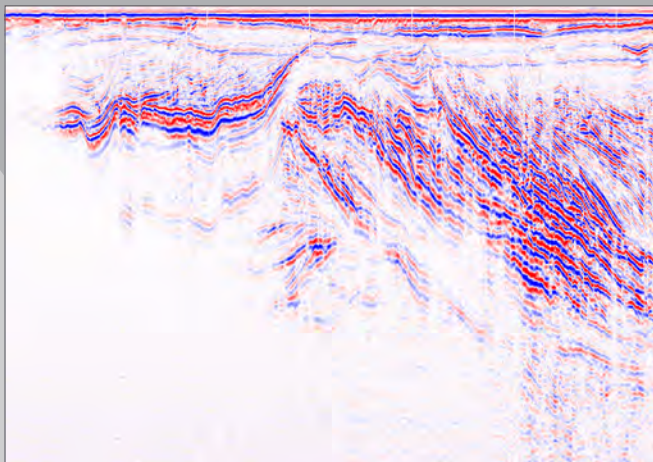
RADAN[®] is GSSI's state-of-the-art post-processing software. With its modular design, this program allows users to select the processing functions that best suit their professional needs. RADAN is Windows[™] based, providing a familiar and easy-to-use environment for all levels of experience.

The RADAN Advantage

There are three types of RADAN packages; RADAN 7, RADAN 7 for UtilityScan, and RADAN 7 for StructureScan Mini. RADAN 7 is the foundation of our post-processing software and offers several add-on modules for application specific needs including; 3D, StructureScan, RoadScan, and BridgeScan.

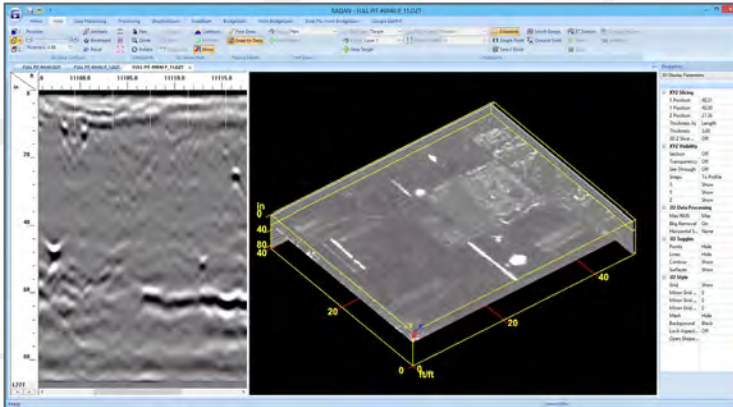
RADAN 7 for UtilityScan is designed to process, view, and document 2D and 3D data collected with the UtilityScan Pro, UtilityScan, UtilityScan HS, UtilityScan DF, and the UtilityScan LT. This package provides channel-blending, background removal, and export to Google Earth capabilities.

RADAN 7 for StructureScan Mini is purpose-built to process, view, and document 2D and 3D data collected with the StructureScan Mini, StructureScan Mini HR, and StructureScan Mini XT systems. This software offers users the ability to migrate targets, change color tables, and save images for report generation.



See our website for more information and detailed specifications: www.geophysical.com

RADAN MODULES

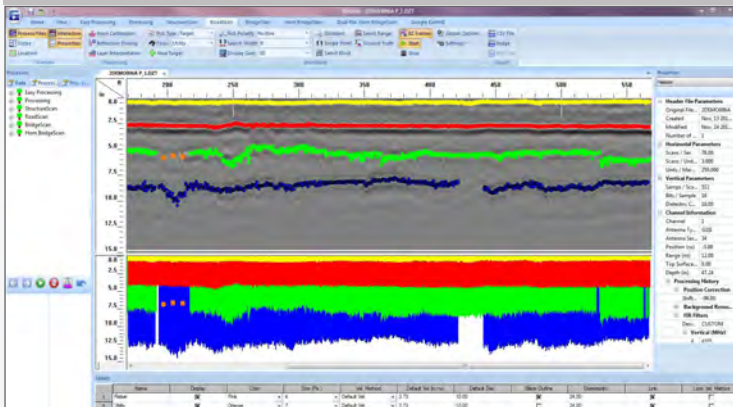
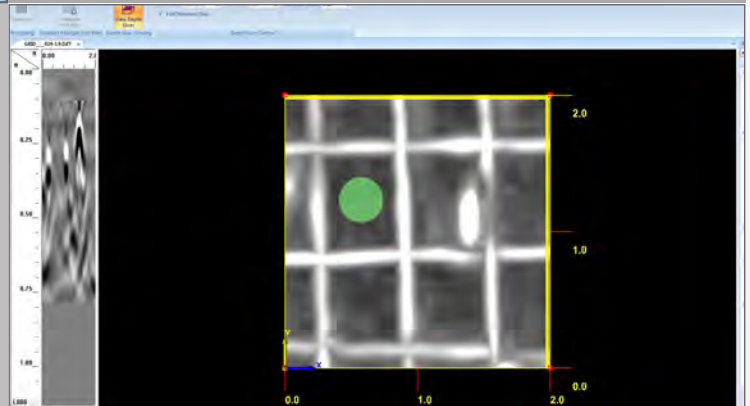


3D Module

The 3D Module for RADAN 7 provides enhanced 3D viewing options in a single dialog box. Users can stretch, shrink or zoom in on files as desired for customized presentation results. The 3D module also allows the entire data cube to be “sliced and diced” along various x, y, and z planes.

StructureScan Module

The StructureScan Module for RADAN 7 easily creates plan view slices to aid in interpretation of StructureScan data files. The versatility of this module allows for a broad range of civil/structural applications.

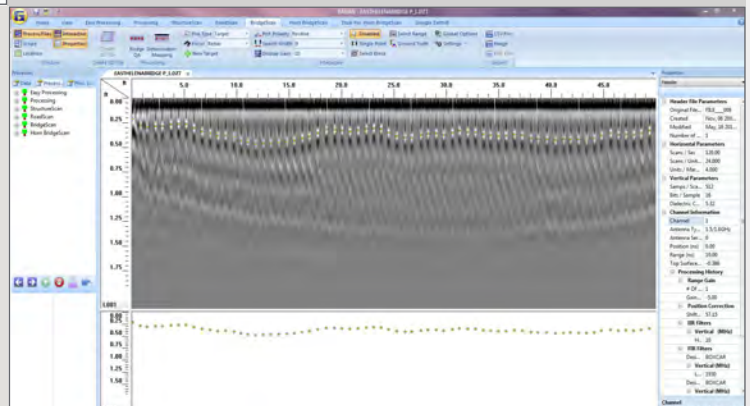


RoadScan Module

The RoadScan Module for RADAN 7 is designed for use with horn (air-launched) antennas. This module uses a signal calibration technique that measures significant layer interface amplitudes from the pavement data and calculates the propagation velocity of the GPR signal through the pavement layer.

BridgeScan Module

The BridgeScan Module for RADAN 7 allows users to: identify rebar, calculate concrete cover over rebar on new deck structures, and perform deterioration mapping. This module incorporates GSSI's patented data analysis method designed for post-processing and analysis that is streamlined specifically for bridge deck data.



Geophysical Survey Systems, Inc.

40 Simon Street • Nashua, NH 03060-3075 USA • www.geophysical.com

Copyright © 2017 All Rights Reserved Geophysical Survey Systems, Inc.
11.15.2017

Info Brasil: www.alphageofisica.com.br

